



NL-Tec Pty Ltd
 P.O. Box 226, Willetton, Western Australia 6955

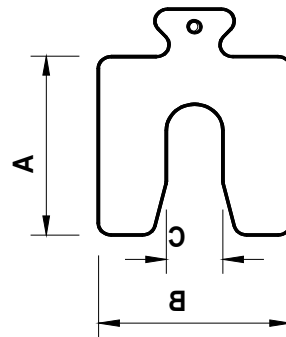
Tel: 08 9332 0925
 Fax: 08 9332 0926
 E-mail: info@nl-tec.com
 Website: www.nl-tec.com

Ozishim – Australian Made Pre-cut Shim

- Highest Quality Grade 316 Stainless Steel Shim Stock
- Clearly Marked Thicknesses in Metric and Imperial
- No Burrs or Sharp Edges
- Higher Slots – No 'Bolt Pull'
- 8# Standard sizes – 13# Thicknesses (4mm and 6mm thickness now available)
- Custom Shims, Washers, Double Slot Shims, Gaskets, Arbor Shims – Any shape



Dimensions (mm)			
	A	B	C
A Shim	50	50	16
B Shim	75	75	22
C Shim	100	100	32
D Shim	125	125	45
E Shim	200	200	55
F Shim	150	150	55
G Shim	130	200	55
H Shim	150	300	55



Shim Thickness (mm):
 0.025, 0.05, 0.075, 0.10, 0.125, 0.20, 0.25, 0.40,
 0.50, 0.70, 1.00, 2.00, 3.00, 4.00, 6.00



Strong, Spacious Carry Boxes